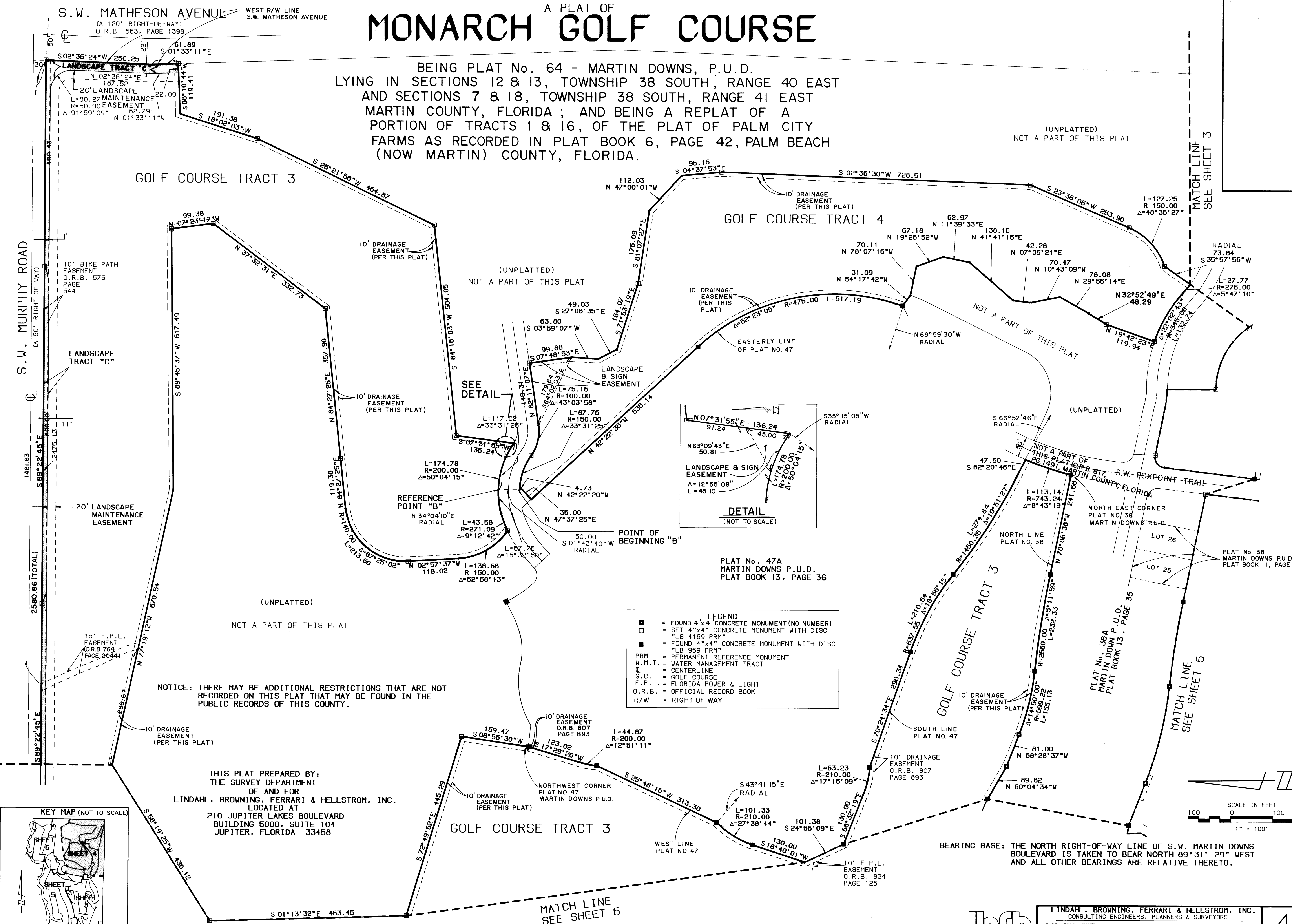


# A PLAT OF MONARCH GOLF COURSE

BEING PLAT No. 64 - MARTIN DOWNS, P.U.D.  
LYING IN SECTIONS 12 & 13, TOWNSHIP 38 SOUTH, RANGE 40 EAST  
AND SECTIONS 7 & 18, TOWNSHIP 38 SOUTH, RANGE 41 EAST  
MARTIN COUNTY, FLORIDA; AND BEING A REPLAT OF A  
PORTION OF TRACTS 1 & 16, OF THE PLAT OF PALM CITY  
FARMS AS RECORDED IN PLAT BOOK 6, PAGE 42, PALM BEACH  
(NOW MARTIN) COUNTY, FLORIDA.



S.W. MATHESON AVENUE  
(A 120' RIGHT-OF-WAY)  
O.R.B. 663, PAGE 1398

S.W. MURPHY ROAD  
(A 60' RIGHT-OF-WAY)

LANDSCAPE TRACT "C"  
20' LANDSCAPE MAINTENANCE EASEMENT  
R=50.00  
L=80.27  
Δ=91°59'09"  
N 01°33'11"W

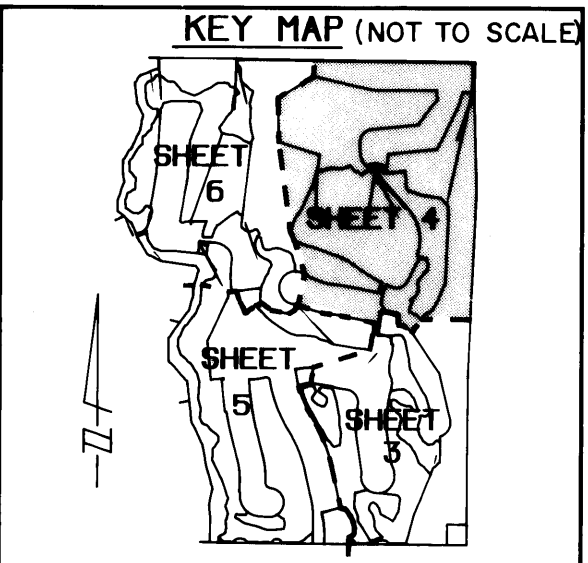
GOLF COURSE TRACT 3

GOLF COURSE TRACT 4

- LEGEND**
- = FOUND 4"x4" CONCRETE MONUMENT (NO NUMBER)
  - = SET 4"x4" CONCRETE MONUMENT WITH DISC "LS 4169 PRM"
  - = FOUND 4"x4" CONCRETE MONUMENT WITH DISC "LB 959 PRM"
  - PRM = PERMANENT REFERENCE MONUMENT
  - W.M.T. = WATER MANAGEMENT TRACT
  - C.L. = CENTERLINE
  - G.C. = GOLF COURSE
  - F.P.L. = FLORIDA POWER & LIGHT
  - O.R.B. = OFFICIAL RECORD BOOK
  - R/W = RIGHT OF WAY

NOTICE: THERE MAY BE ADDITIONAL RESTRICTIONS THAT ARE NOT RECORDED ON THIS PLAT THAT MAY BE FOUND IN THE PUBLIC RECORDS OF THIS COUNTY.

THIS PLAT PREPARED BY:  
THE SURVEY DEPARTMENT  
OF AND FOR  
LINDAHL, BROWNING, FERRARI & HELLSTROM, INC.  
LOCATED AT  
210 JUPITER LAKES BOULEVARD  
BUILDING 5000, SUITE 104  
JUPITER, FLORIDA 33458



SEE SHEET 7 OF 7 FOR TABLED ANNOTATION



LINDAHL, BROWNING, FERRARI & HELLSTROM, INC.  
CONSULTING ENGINEERS, PLANNERS & SURVEYORS  
BLDG. 5000, SUITE 104 10 CENTRAL PARKWAY 2222 COLONIAL ROAD  
210 JUPITER LAKES BLVD. SUITE 420 SUITE 201  
JUPITER, FL 33458 FT. PIERCE, FL 34907 FT. PIERCE, FL 34909  
407-746-9248 407-266-3883 407-461-2460

47